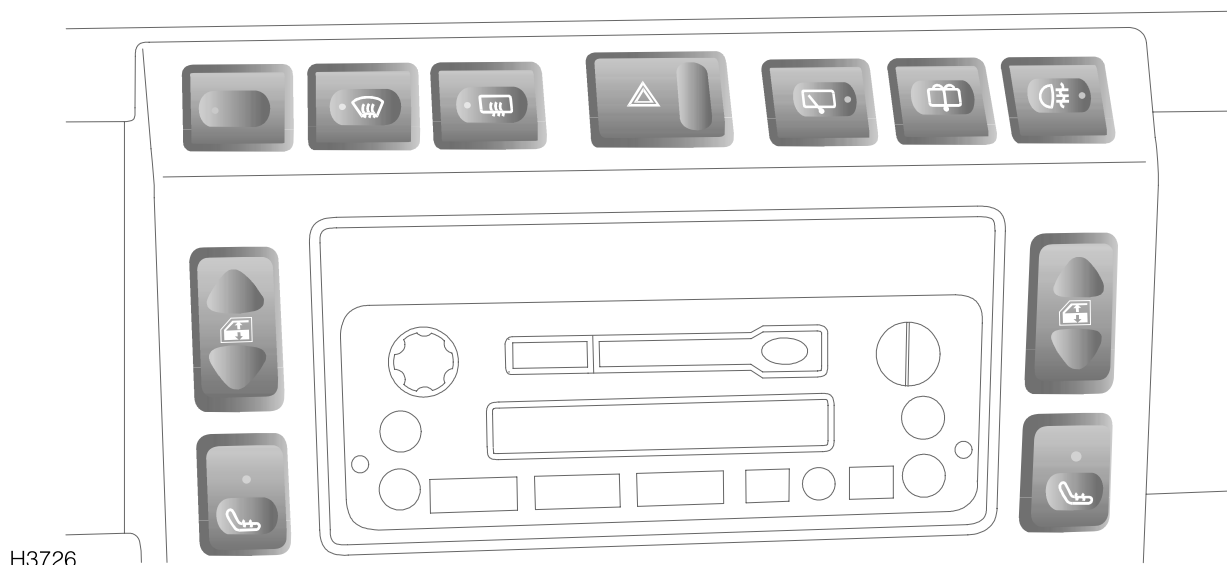


Controls

FASCIA SWITCHES



H3726

Heated front screen*



Press to operate (see '*Heated front screen**', page 50).

Heated rear screen*



Press to operate (see '*Heated rear window**', page 50).

Hazard warning lights



Press to operate (see '*HAZARD WARNING LIGHTS**', page 38).

Rear window wiper*



Press to operate (see '*Rear window wiper**', page 40).

Rear window washer*



Press to operate (see '*Rear window washer**', page 40).

Rear fog guard lights*



Press to operate (see '*Rear fog guard lights**', page 38).

Electric windows*



Press the appropriate switch to operate the front left or right window (see '*Operating the windows**', page 43)

Seat heaters*



Press the appropriate switch to operate the front left or right seat heater (see '*HEATED FRONT SEATS**', page 22).

Locks & Alarm

KEYS AND HANDSETS

You have been supplied with two remote handsets and two sets of keys, comprising:

- A black key for operating the starter switch and door locks.
- A smaller metal key to operate the fuel filler cap lock.

The starter key number is stamped on a tag attached to the key ring. Check that the key number has been entered in the space provided on your Security card.

If the remote handset is lost, contact a Land Rover dealer, who can supply a replacement unit.

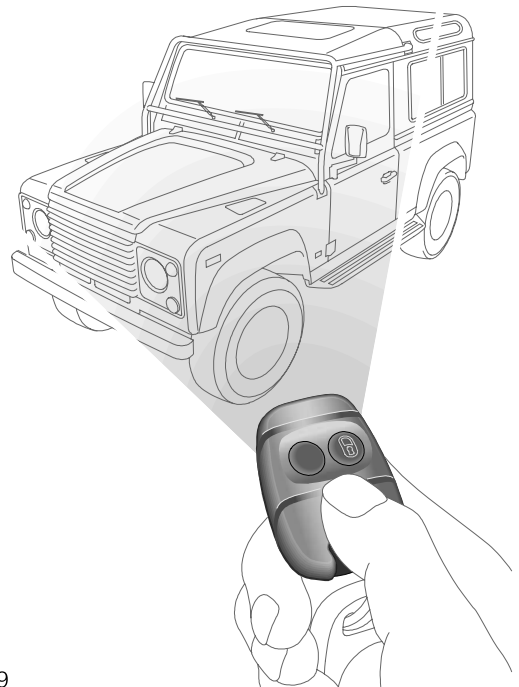
WARNING

Keep the Security card and spare handset and keys in a safe place - NOT IN THE VEHICLE!

ALARM SYSTEM*

Your vehicle is fitted with a sophisticated electronic anti-theft alarm and engine immobilisation system. In order to ensure maximum security and operating convenience, you are strongly advised to gain a full understanding of the alarm system, by thoroughly reading this section of the handbook.

Using the remote handset



H3619

While it is not necessary to point the handset at the vehicle, the handset must be within range of the vehicle when a button is pressed. Note that the operating range may vary depending upon handset battery condition and may sometimes be limited by physical and geographical factors beyond your control. From a security point of view, it may not be wise to unlock unless you are within a few feet of the vehicle.

Vehicles with central door locking

Locking with the remote handset:

Press the lock (padlock symbol) button once:

- all doors are locked (including the tail door)
- engine immobilised
- perimeter alarm activated (protects the doors and bonnet)
- interior space protection activated

The direction indicator lights flash three times to confirm that the vehicle is secure and the anti-theft alarm indicator light (in the instrument panel) starts to flash.

Locks & Alarm

Locking with the key:

Insert the key and turn the driver's door lock towards the rear of the vehicle:

- all doors locked (including the tail door)
- engine immobilised
- NO PERIMETRIC ALARM OR INTERIOR SPACE PROTECTION

The anti-theft alarm indicator light (in the instrument panel) starts to flash after 30 seconds to show that the engine is immobilised.

Unlocking with the remote handset:

Press the unlock (PLAIN) button once to disarm the alarm and unlock the doors.

The direction indicator lights flash once and the interior lights illuminate.

Unlocking with the key:

While all the doors can be unlocked using the key in the driver's door lock, this method is NOT RECOMMENDED - depending on the specification of the vehicle the alarm may not be disarmed.

Vehicles without central door locking

Locking & unlocking:

Each door lock must be operated individually, using the key. The handset will NOT operate the door locks. Turn the key towards the rear of the vehicle to lock and towards the front to unlock.

Arming & disarming the alarm:

Press the lock button on the handset to arm the alarm.

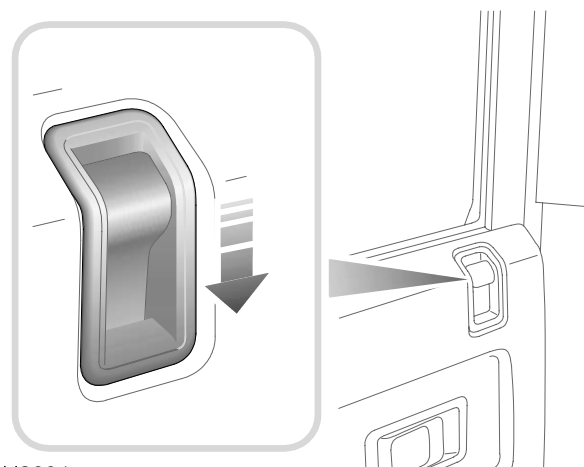
- Perimetric protection protects the doors and bonnet.
- Interior space protection is activated.
- Engine is immobilised.

Provided the doors and bonnet are securely closed, the direction indicators will flash three times and the anti-theft alarm indicator in the instrument panel will start to flash.

To disarm the alarm, press the unlock (PLAIN) button on the handset; the direction indicators will flash once and the interior lights illuminate.

Door sill locking buttons

From inside the vehicle, each door can be individually locked by depressing the appropriate sill locking button.



H3664

WARNING

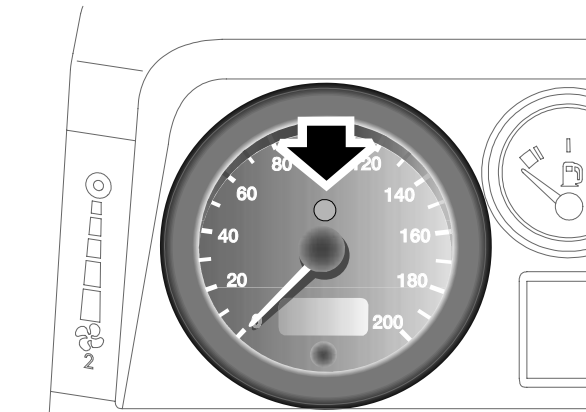
DO NOT depress the sill buttons as a means of locking the doors from outside the vehicle (this practice - known as 'slam locking' - is NOT recommended, because keys can be locked inside accidentally).

On vehicles with central door locking, operation of the driver's door sill locking button locks all the other doors too. However, engine immobilisation and interior space protection are suspended unless the handset lock button is pressed as well.

Locks & Alarm

NOTE: Slam locking, as described above, is prohibited on vehicles with central door locking.

Anti-theft alarm indicator light



H3662

The indicator light in the speedometer (arrowed in illustration) provides information about the status of the alarm system, as follows:

When the alarm is armed:

The light flashes rapidly while the alarm is arming itself. After ten seconds, the light adjusts to a slower frequency and continues to flash as an anti-theft deterrent until the alarm is disarmed.

If the engine is immobilised (even though the alarm has been disarmed):

The light flashes slowly until the engine is remobilised.

If the alarm has been triggered:

The light will flash rapidly when the alarm is disarmed until the starter switch is turned to position II.

If the remote handset battery power is low:

The light will flash rapidly during the initial ten seconds after the handset has been used, while the alarm system is arming.

If the driver's door is open:

The light illuminates for ten seconds, before adjusting to slow frequency flashing.

Mislock

If a door is not fully closed when the handset lock button is pressed, the hazard warning lights will fail to flash, indicating a mislock. In this case, the alarm system will not be fully armed and on vehicles with central door locking, none of the doors will lock.

As soon as the open aperture is closed, the hazard warning lights will flash and the anti-theft alarm indicator light will resume flashing to confirm that the system has returned to a fully armed state.

NOTE: If a mislock occurs as a result of an open door, interior space protection will not be activated.

NOTE: If a mislock occurs as a result of an open bonnet, the door apertures will still be protected by the alarm system and interior space protection will be active.

If the alarm sounds

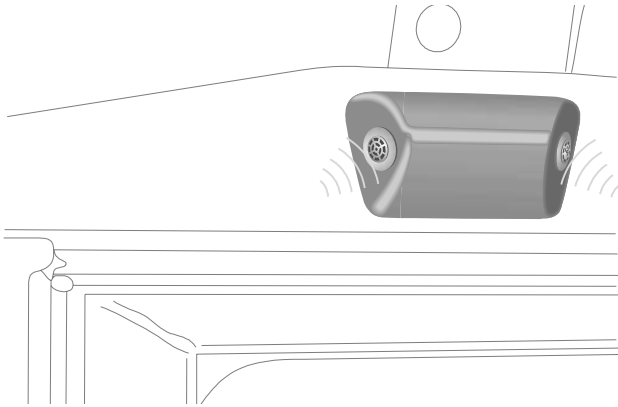
If the alarm is triggered, the alarm sounder or vehicle horn will sound for 30 seconds before switching off and resetting itself to the same protection status that existed prior to the alarm being triggered. The alarm can be triggered up to three times before needing to be reset.

To silence the alarm, press either button on the remote handset.

NOTE: While the alarm is sounding, the hazard warning lights will flash to provide a visual alarm.

Locks & Alarm

INTERIOR SPACE PROTECTION



Interior space protection is designed to protect the interior of the vehicle from intrusion (entry by a thief through a smashed window, for example). Twin sensors monitor the interior space and activate the alarm if air movement is detected in the passenger compartment.

Using the handset:

Interior space protection is activated automatically whenever the remote handset is used to set the alarm and can ONLY be deactivated with the handset.

Key operation:

On vehicles fitted with central door locking, using the key to arm the alarm will NOT activate (or deactivate) interior space protection.

NOTE: Interior space protection cannot be activated if a door is open, or if the starter switch is turned on.

NOTE: Interior protection will not operate for the first 15 seconds after the alarm is set.

WARNING

Never activate interior space protection if windows or sunroof are to be left open, or if passengers or animals are to be left inside the vehicle - any movement will activate the alarm.

Vehicles without central door locking

IMPORTANT INFORMATION

To disable interior space protection when setting the alarm, use the following procedure:

1. Open the driver's door.
2. With the driver's door open, use the handset to arm the alarm in the normal way.
3. Close the driver's door (the hazard warning lights flash three times and the anti-theft indicator light commences flashing rapidly).

The alarm system is now armed with interior protection disabled.

Locks & Alarm

ENGINE IMMOBILISATION

Engine immobilisation is an important aspect of the security system, and includes a feature known as 'passive immobilisation'. This is designed to safeguard the vehicle from theft, should the driver forget to lock the doors or arm the alarm. Engine immobilisation is automatic whenever any of the following conditions occur:

- The vehicle is locked using handset or key.
- Thirty seconds after the starter switch has been turned off AND the driver's door opened.
- Five minutes after the starter switch is turned off, or the alarm system is disarmed.

IMPORTANT INFORMATION

The engine immobilisation system relies on the handset to re-mobilise the engine. Look after the handsets at all times, protecting them from loss, damage and battery discharge.

If the engine has immobilised passively, re-mobilisation will occur when the starter switch is turned to position 'II', provided the handset is on the same ring as the key and in close proximity to the switch.

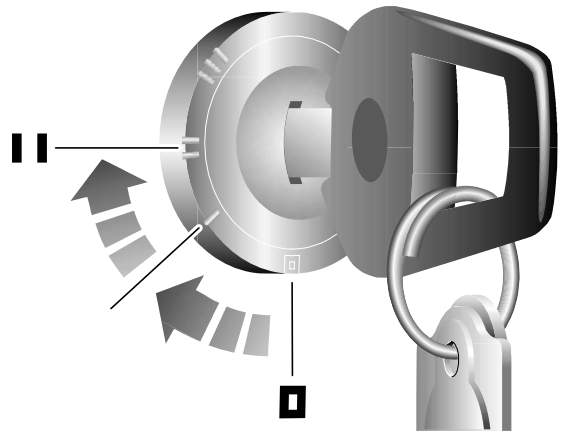
- ALWAYS keep the handset on the same ring as the key.
- NEVER attach both handsets to the SAME key ring.

Any attempt to start the engine while it is immobilised, will cause the engine immobilisation warning light (in the speedometer) to flash.

Emergency key access

If the handset is damaged, or fails to operate, the engine can be re-mobilised by using the starter key to enter a unique four number emergency key access code. The code is recorded on the Security card and is entered as follows:

If your handset is lost or inoperative, it is impossible to disarm the alarm. As soon as the door is opened, the alarm will sound (continuously for up to three 30 second periods), and continue while the code is being entered.



H3615

1. Remove the handset from the key ring and keep the handset well away from the starter switch when entering the code.
2. From inside the vehicle, with the driver's door closed, immediately insert the key into the starter switch and turn to position 'II'. Hold this position until the alarm sounds, then switch off and open and close the driver's door.
3. Turn the starter switch to position 'II' the required number of times to enter the first digit of the code (if the first digit is 4, turn the key to position 'II' and then back to '0' four times).
4. Open and close the driver's door (this will enter the first digit of the code).

Locks & Alarm

5. Turn the starter switch to position 'II' and back to '0' the required number of times to enter the SECOND digit of the code.
6. Open and close the driver's door again.
7. Turn the starter switch to position 'II' and back to '0' the required number of times to enter the THIRD digit of the code.
8. Open and close the driver's door again.
9. Turn the starter switch to position 'II' and back to '0' the required number of times to enter the FOURTH digit of the code.
10. Finally, open and close the driver's door one more time.

If the code has been entered correctly, the anti-theft indicator light will extinguish, the alarm will stop sounding and the engine can be started.

If an incorrect code has been entered:

If the code is entered incorrectly, the alarm sounder will sound twice, the anti-theft indicator light will continue to illuminate, and the engine will fail to start. Before entering the code again, turn the starter switch to position 'II' and hold in this position for 5 seconds.

After three failed entry attempts, the security system invokes a delay period of thirty minutes during which the system will not accept any further attempts to enter a code.

IMPORTANT INFORMATION
Memorise the emergency key access code or keep the Security card on your person in case of emergencies. NEVER leave the card in the vehicle.

REMOTE HANDSET BATTERY

The battery should last for approximately three years dependent upon use. When the battery needs replacing it will be apparent from the following symptoms:

- The handset will only work every other operation while disarming.
- The hazard warning lights will not flash when the alarm is disarmed.

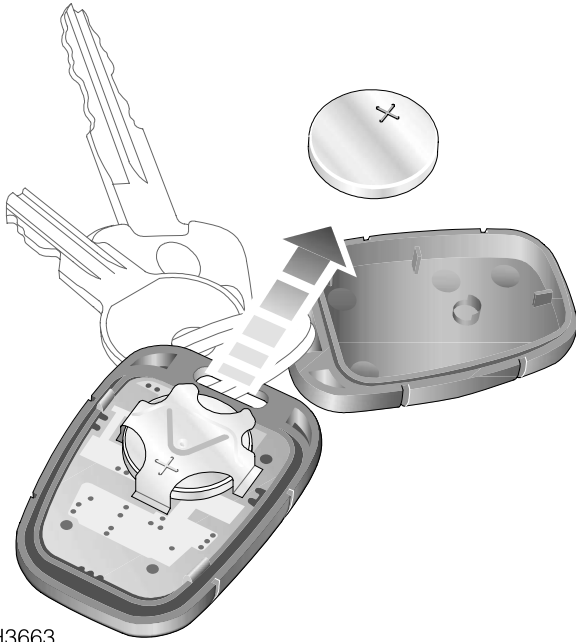
Always fit a Land Rover STC 4080 or a Panasonic CR2032 replacement battery (available from a Land Rover dealer).

IMPORTANT INFORMATION
<ul style="list-style-type: none">• DO NOT remove a battery until you are ready to install the replacement.• The engine will immobilise five minutes after the key is removed from the starter switch (or 30 seconds after the starter has been switched off and the driver's door opened). If handset battery replacement is NOT completed within this period, the emergency key access code will have to be entered before the handset can be synchronised.

WARNING
<i>The handset contains delicate electronic circuits and must be protected from impact and water damage, high temperatures and humidity, direct sunlight and the effects of solvents, waxes and abrasive cleaners.</i>

Locks & Alarm

Battery replacement



H3663

1. Unlock the vehicle and disarm the alarm system.
2. Turn the starter switch to position 'II', then turn to position '0' and remove the key.
3. Carefully prise the handset apart; start from the key ring end using a coin or small screwdriver. Avoid damaging the seal between the two halves of the case and DO NOT allow dirt or moisture to get inside the handset.
4. Slide the battery out of its clip, taking care to avoid touching the circuit board or the contact surfaces of the clip.
5. Press and hold one of the buttons for at least five seconds (this will drain any residual power from the handset).
6. Fit the new battery, ensuring that correct polarity is maintained ('+' side facing up). Finger marks will adversely affect battery life; if possible, avoid touching the flat surfaces of the battery and wipe them clean before fitting.
7. Press the two halves of the handset firmly together and ensure that both halves are fully joined, to prevent dirt or moisture from entering the handset.
8. Operate the PADLOCK symbol button at least four times within range of the vehicle to resynchronise the handset.
9. Press the unlock button once to unlock the vehicle.

The handset is now ready for use.

Locks & Alarm

ALARM OR HANDSET DIFFICULTIES

If the alarm goes off unexpectedly:

Ensure all the windows and sunroof are closed, or if they need to be left open, disable interior space protection.

If the alarm goes off when a door is opened:

Disarm the alarm with the handset before unlocking. If the handset has failed, enter the emergency key access code (refer to '*Emergency key access*', page 15).

If the starter will not operate:

Ensure the handset is on the same key ring as the starter key. If it still will not operate, consult a Land Rover dealer.

If the hazard warning lights fail to flash when the alarm is armed:

A door or bonnet is partially opened - close the open aperture and try again.

IMPORTANT INFORMATION
Battery disconnection Your vehicle is equipped with a battery backed-up sounder, which operates as an anti-theft siren if the vehicle battery is disconnected. Before disconnecting the vehicle battery, it is ESSENTIAL to refer to ' <i>Battery removal and replacement</i> ', page 115, in order to prevent the alarm from sounding. If the vehicle battery is disconnected for any reason, the status of the security system prior to disconnection will be memorised and automatically reset when the battery is reconnected.