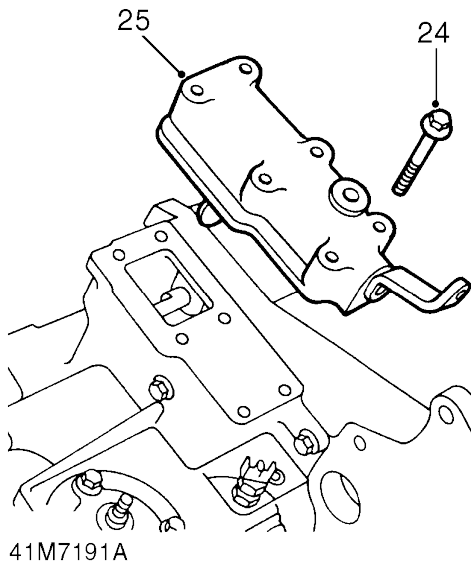


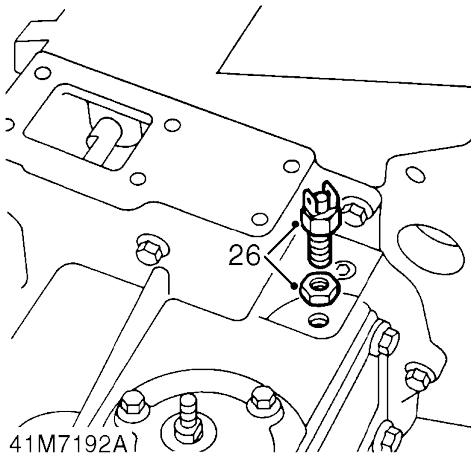
TRANSFER BOX



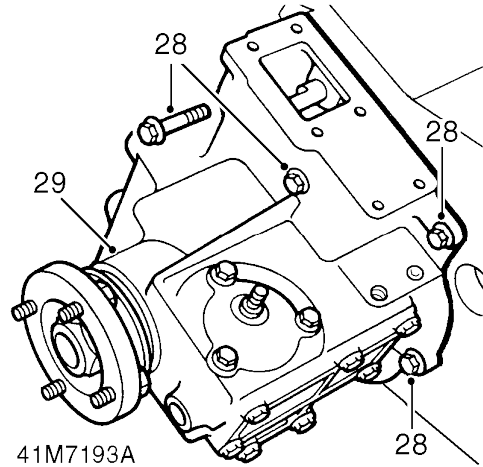
- 24. Remove 6 bolts securing high/low cross shaft housing.
- 25. Remove cross shaft housing.



CAUTION: Do not carry out further dismantling of cross shaft housing at this stage.



- 26. Slacken locknut and remove differential lock warning lamp switch from front output housing.
- 27. Clean sealant from threads of switch and output housing.



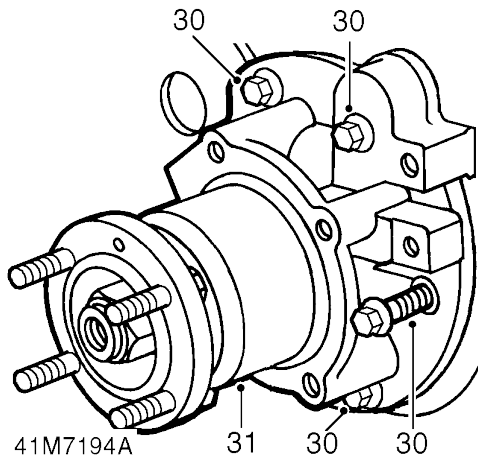
- 28. Noting fitted position of longest bolt, remove 8 bolts securing front output housing to main casing.
- 29. Remove front output housing.



NOTE: Dowel located.



CAUTION: Do not carry out further dismantling of front output housing at this stage.



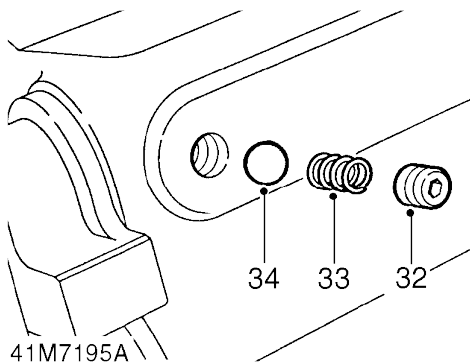
- 30. Noting their fitted position, remove shoulder bolt, 5 bolts and 2 washers securing rear output housing to main casing.
- 31. Remove rear output housing.



NOTE: Dowel located.



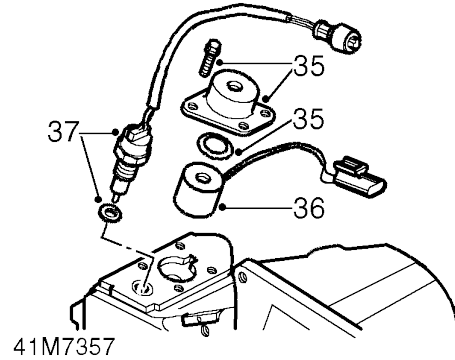
CAUTION: Do not carry out further dismantling of rear output housing at this stage.



- 32. Remove plug securing high/low selector shaft detent spring and ball.
- 33. Remove detent spring.
- 34. Remove ball using a stick magnet.



CAUTION: Suitably identify plug, detent spring and ball to their fitted positions, do not interchange with differential lock selector shaft detent components.

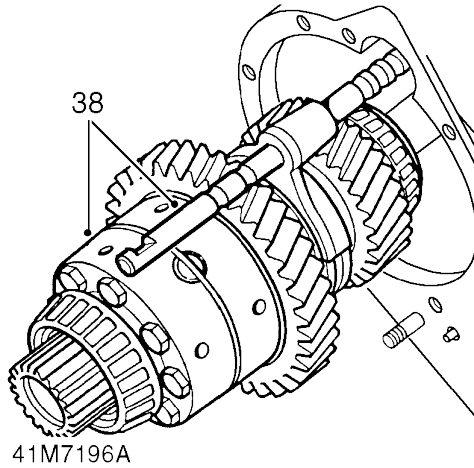


If fitted

- 35. Remove 4 bolts securing interlock solenoid cover, remove cover and Belleville washer.
- 36. Remove interlock solenoid.
- 37. Remove neutral warning lamp switch and washer.

TRANSFER BOX

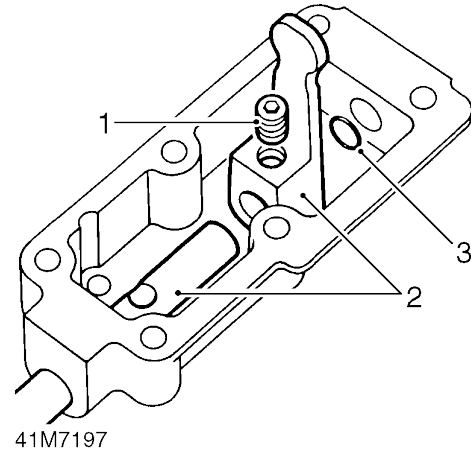
All transfer boxes



- 38.** Withdraw differential assembly together with high/low selector shaft and fork.

COMPONENT DISMANTLING

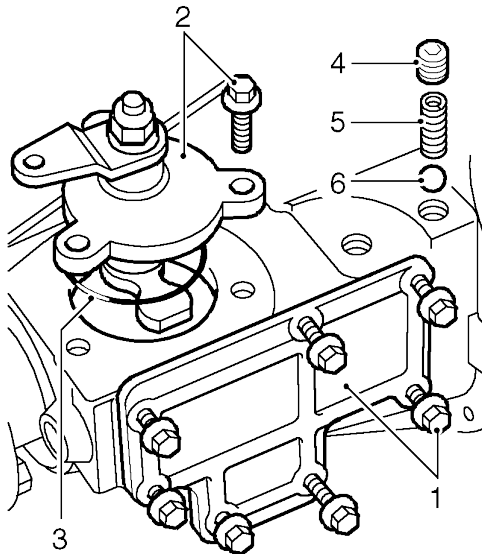
High/low cross shaft housing



1. Remove setscrew securing high/low selector finger to cross shaft.
2. Withdraw cross shaft from housing, recover high/low selector finger.
3. Remove and discard 'O' ring.



Front output housing

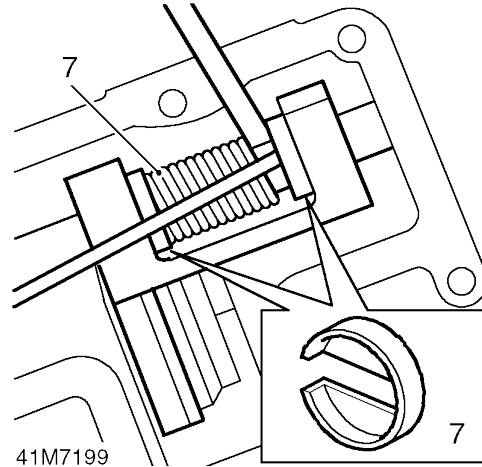


41M7198

1. Remove 7 bolts securing differential lock selector side cover, remove cover.
2. Remove 3 bolts securing differential lock selector housing, remove housing and selector as an assembly.
3. Remove and discard 'O' ring from selector housing.
4. Remove plug securing differential lock detent spring and ball.
5. Remove detent spring.
6. Remove ball using a stick magnet.

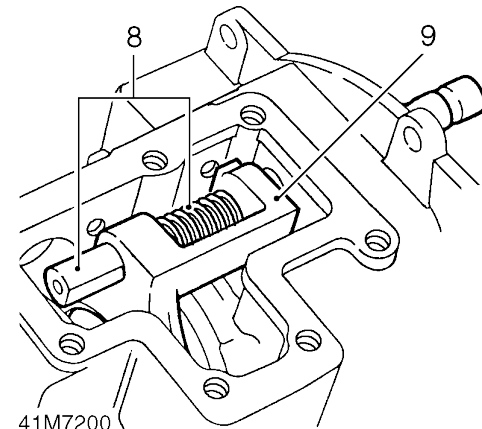


CAUTION: Suitably identify plug, detent spring and ball to their fitted positions, do not interchange with high/low selector shaft detent components.



41M7199

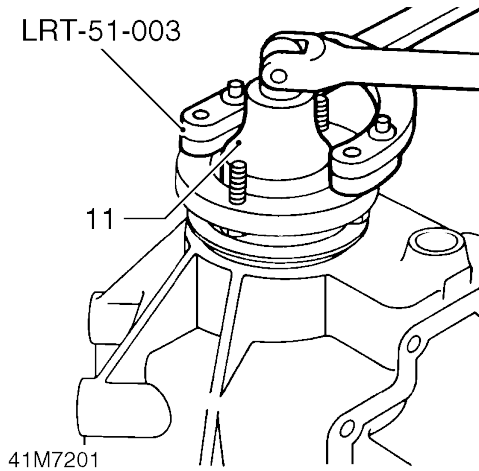
7. Compress differential lock selector fork spring and remove retaining clip from each end of spring.



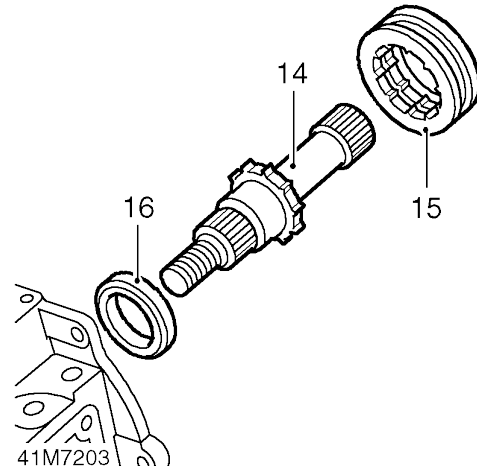
41M7200

8. Withdraw differential lock selector shaft from front output housing, recover spring.
9. Remove differential lock selector fork.

TRANSFER BOX

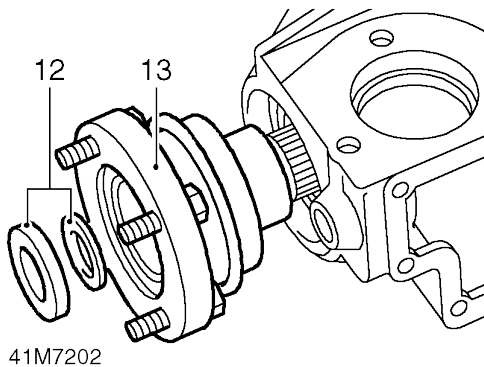


10. Position propeller shaft flange holding tool **LRT-51-003** to output shaft flange.
11. Remove and discard self-locking nut.



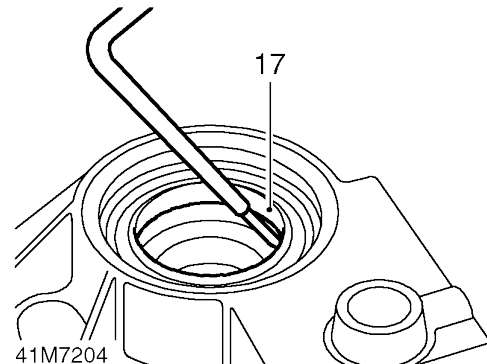
14. Using a mallet, drive output shaft out of front output housing.

NOTE: If it is necessary to use a hand press to remove output shaft, position thrust button LRT-370-11/2 between shaft and press mandrel.

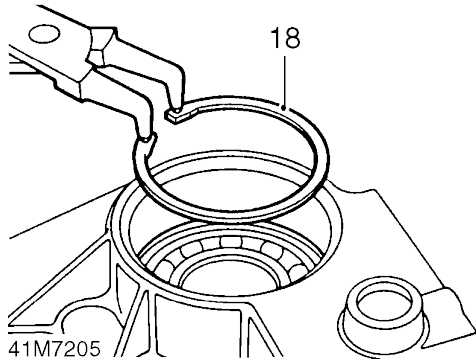


12. Remove steel and felt washers, discard felt washer.
13. Remove output shaft flange together with mud shield.

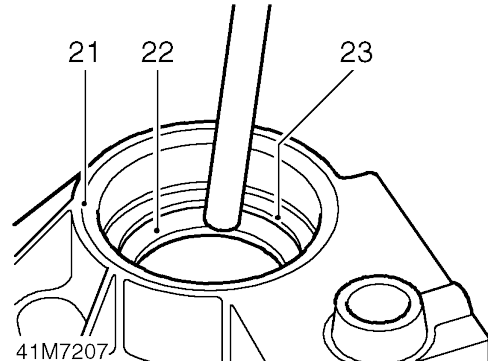
NOTE: A replacement output flange will be supplied with new mud shield and output shaft oil seal.



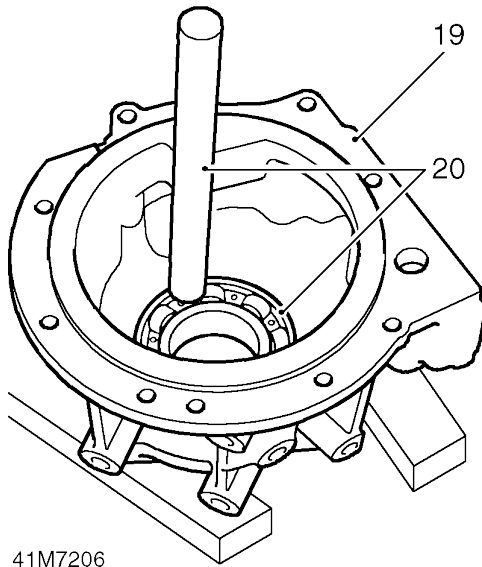
15. Noting its fitted position, remove dog clutch from output shaft.
16. Noting its fitted position, remove bearing spacer from output shaft.
17. Taking care not to damage front output housing, remove and discard output shaft oil seal.



18. Using suitable circlip pliers, remove and discard circlip retaining output shaft bearing.



21. Invert front output housing.
22. Using a soft metal drift, drive differential bearing track out of housing, discard bearing track.
23. Remove selective shim.



19. Support front output housing on suitable blocks of wood.
20. Using a soft metal drift, drive output shaft bearing out of housing; discard bearing.