

DDPMREAL
ENG_VEH_SP
VRN:

SELECT REQUIREL _PTION

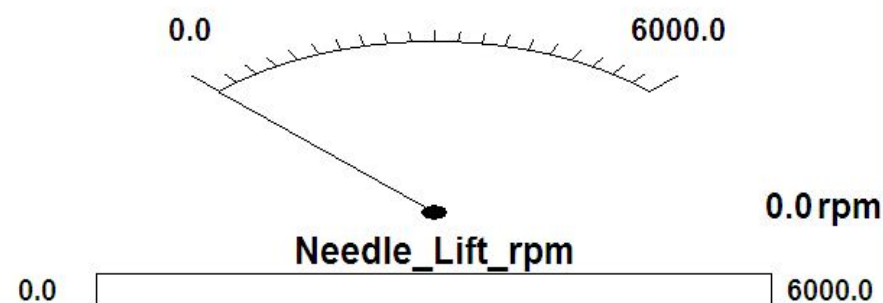
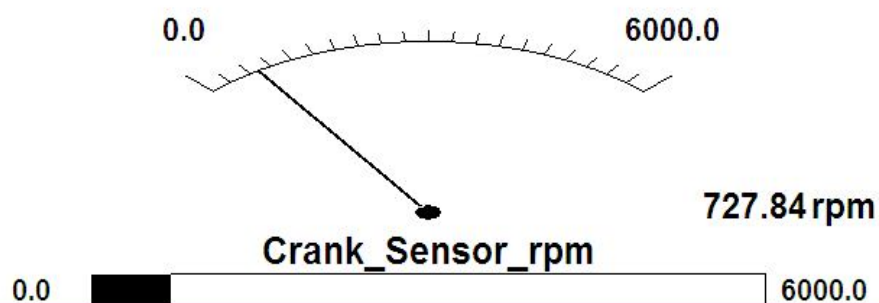
RANGE ROVER - MODEL YEAR 1998

6.00

CRANK SENSOR RPM AND NEEDLE LIFT

Please wait until gauges appear

Engine RPM is normally taken from the crank sensor. However if the crank sensor fails The system will default to the signal provided by the needle lift sensor. The needle lift signal is less accurate than the crank sensor signal. Defaulting to the needle lift signal could result in a high idle speed.



Abort

Back
TrackVehicle
Log

Print

Help

Continue