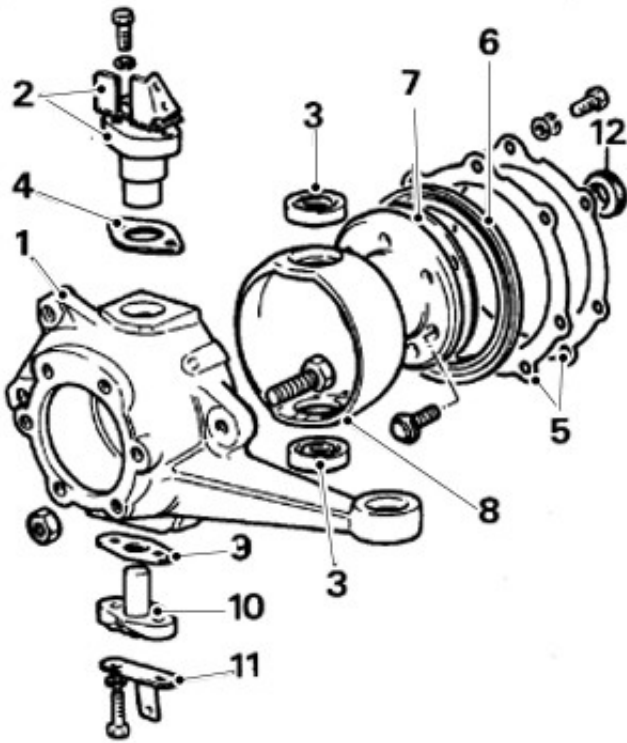


Front Drive Axle/Differential - Front Stub Axle, Constant Velocity (CV) Joint and Swivel Pin Housing

Disassembly and Assembly



RR980M

Item	Part Number	Description
1.	-	Swivel pin housing
2.	-	Top swivel pin and brake hose bracket
3.	-	Upper and lower swivel pin bearings
4.	-	Shim
5.	-	Retaining plate and washer
6.	-	Oil seal
7.	-	Joint washer
8.	-	Swivel bearing housing
9.	-	Joint washer
10.	-	Lower swivel pin
11.	-	Mudshield bracket
12.	-	Swivel housing inner oil seal

Disassembly

1. Remove front hub assembly.
For additional information, refer to: Wheel Bearing and Wheel Hub - Vehicles Built Up To: 01/1999 (204-01, Removal and Installation) / Front Wheel Bearing and Wheel Hub (204-01 Front Suspension, Removal and Installation).
2. **NOTE:** On later vehicles the swivel pin housing is filled with grease for life, the level and drain plugs being deleted.

Drain swivel pin housing and refit plug.
3. Remove 6 bolts retaining stub axle to swivel housing.
4. Remove mud shield.